



CONSTRUCTION &
PROJECT MANAGEMENT

COMPANY PROFILE



Contents

- 02 About us**
- 03 Our Vision**
- 04 Our Mission**
- 05 History & Growth**
- 06 Geographical Presence**
- 07 Scope of services**
- 08 Methodology**
- 09 How it works?**
- 10 Our Portfolio**
- 11 Our Contact**

About us

About Our Company

Founded in 2018, 4MPM Construction & Project Management is an independent construction consulting firm built on 17 years of industry expertise. Our commitment to excellence, innovation, and integrity drives every project we undertake.

Our Vision

01

Vision 2030

"Vision 2030" is our vision to create an environment within the construction sector based on integrity and good governance. We also aim to expand our expertise globally, specifically focusing on Africa and the Gulf. 4MPM has established itself as a prominent partner for numerous clients in markets such as Warehousing & Distribution, Healthcare, Architecture, and Construction Management.

02

Transparency & Quality

We emphasize open communication in every project to serve our clients, stakeholders, and contractors. We approach each project with a unique blend of technical expertise, dedication, and experience from our passionate team. We constantly enhance construction standards through team accountability.

03

Artificial Intelligence

We consistently explore various avenues to incorporate AI into our projects. Our team is proficient with current technologies such as BIM, Winqs, Autodesk, and others. However, our primary focus is on integrating more advanced technologies, including remote monitoring and AI-driven risk mitigation software, into our projects.



Our Mission



Mission

4MPM is dedicated to maintaining high quality and attention to detail. 4MPM aims to consistently meet or exceed quality standards set by clients and international standards. The company is committed to fulfilling all obligations with responsibility, diligence, and efficiency.

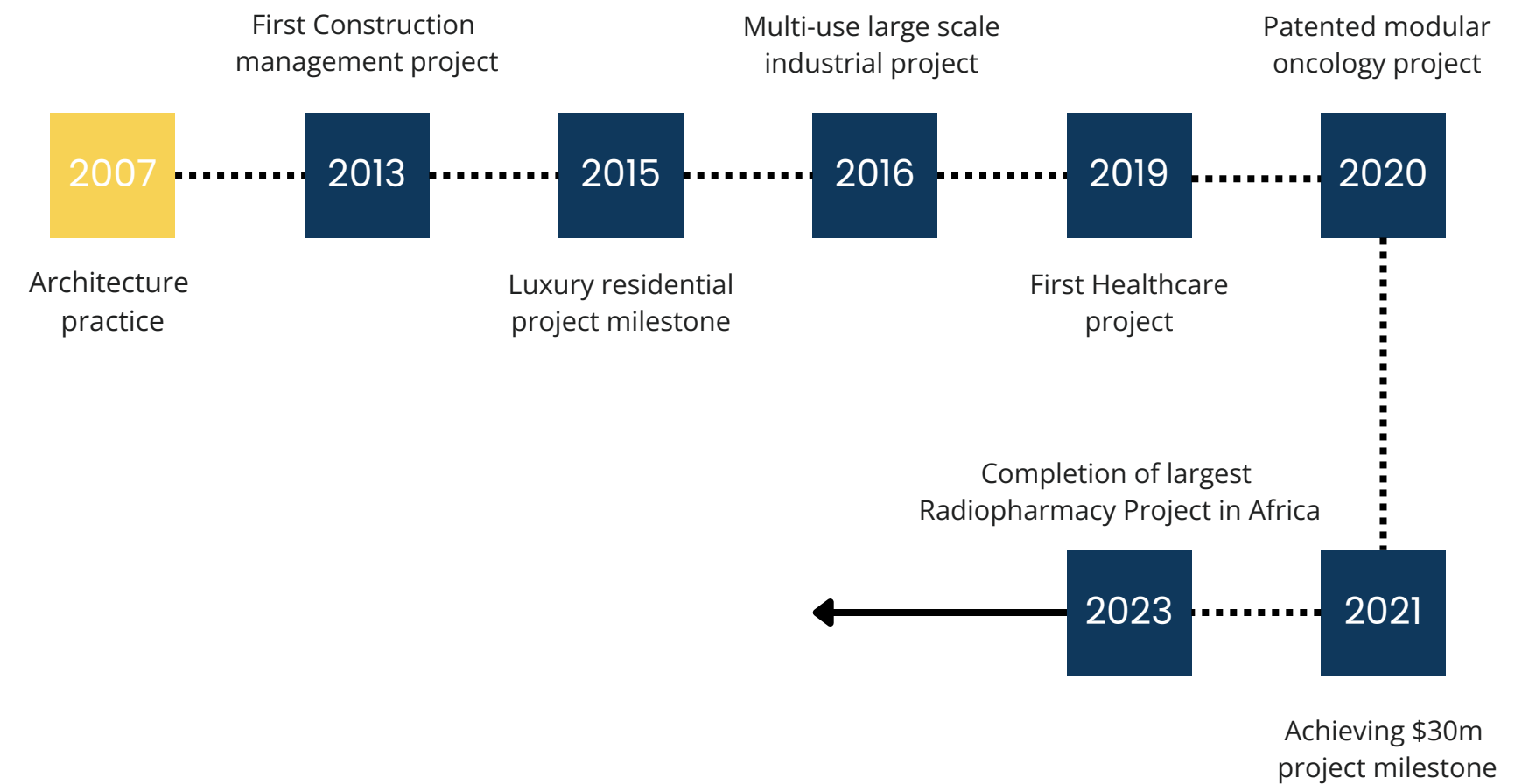
We utilise the diverse expertise of an international management consultancy combined with that of a construction consultancy firm. 4MPM is dedicated to treating customers fairly and professionally by maintaining flexibility and adaptability in our approach.





History & Growth

Founded in 2007 with formal establishment in 2018, 4MPM comprises nearly 30 engineering and design professionals with 10-40 years of experience. We offer comprehensive and sustainable services in architecture, mechanical, electrical, plumbing, structural, and civil design. From concept to delivery, we integrate energy-efficient and cost-effective systems to enhance our designs.



Geographical Presence

HQ

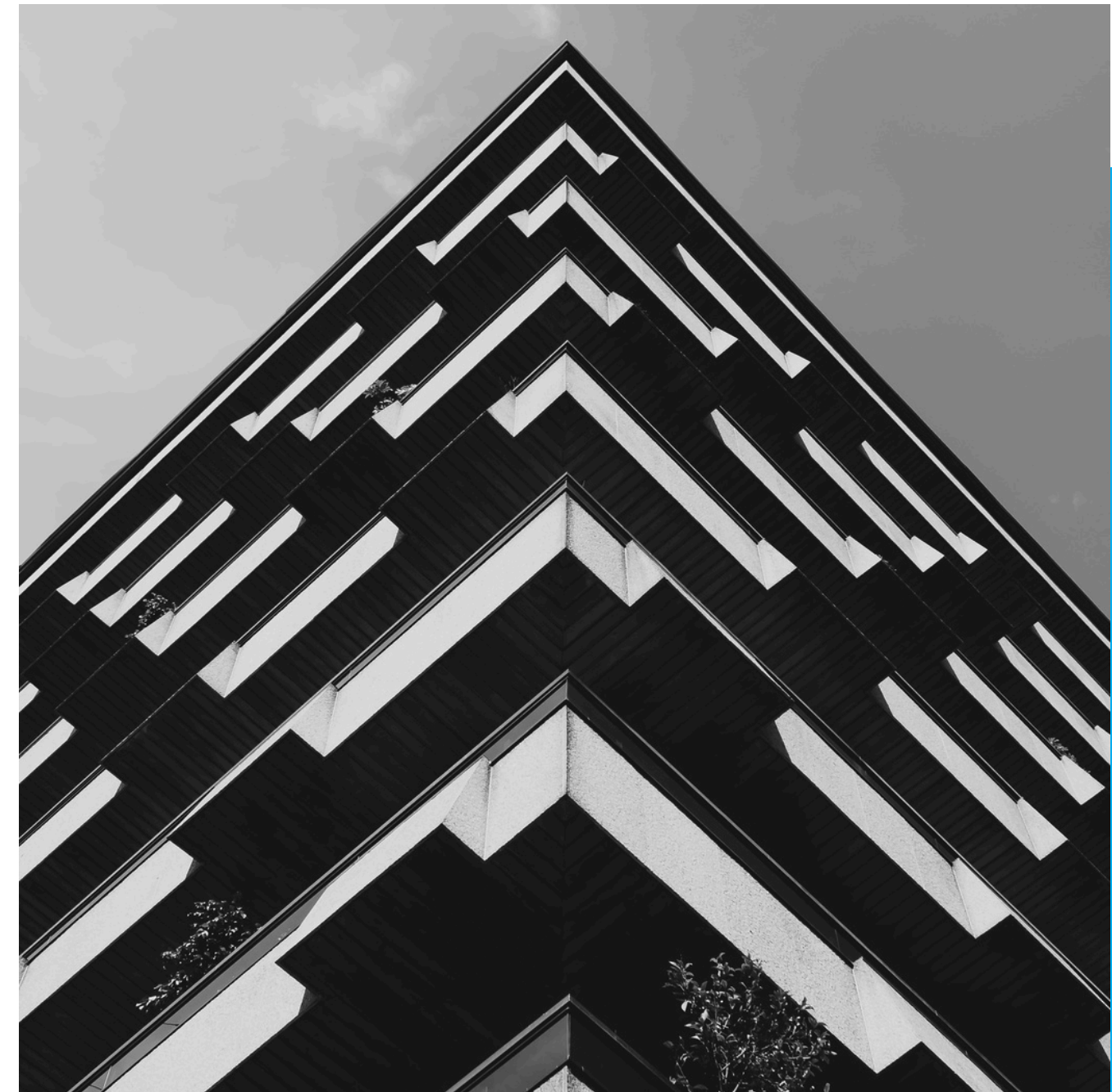
4MPM's offices are situated in Johannesburg, South Africa.

Our team comprises over 30 professionally qualified engineers, architects, quantity surveyors, and design professionals who collaboratively contribute to the market, bringing a wealth of expertise and skill.

Growth Plan

4MPM intends to pursue its growth strategy this year by continuing to invest in services and enhancing its global presence by 2026. The company plans to achieve organic growth throughout Africa and the Middle East.

In 2025, 4MPM aims to expand its global footprint by establishing new locations in Turkey and Oman. Additionally, the company will scale up by recruiting highly skilled professionals in architecture, engineering, and healthcare services while reinforcing its African headquarters in Johannesburg.



Scope of services

Project Management & Construction Management

- End-to-end project management for local and international construction contracts
- Cost studies, Bill of Quantities (BOQ), estimation, and pricing
- Feasibility studies
- Management of development constraints to mitigate risks related to local authority land rights and private property land use schemes
- Site supervision of projects
- Management services for construction
- Witnessing of pre-commissioning tests
- Commissioning of electrical installations
- Commissioning of mechanical installations

Architectural Design

- Site master plans/Development Plans
- Site analysis and feasibility studies
- Stages 1-4 development plans
- Concept design and BIM modeling
- Functional space and workflow design
- Landscape architecture
- Local authority documentation

Structural Engineering

- Structural design of low-rise buildings
- Geotechnical studies
- Concrete, masonry, steel, and timber design
- Equipment support design

Mechanical Engineering

- Plant and services layouts
- Fire rational design
- Fire impact analysis and risk assessments
- HVAC systems specification and design
- Mechanical piping design (plumbing, stormwater)
- Specialty services design (Medical gasses and shielded nuclear support gasses)

Electrical Engineering

- Electrical layout design
- Equipment support design
- BMS and EMS design
- Fire detection and building security design
- Access control
- Lighting design
- Backup power systems
- Renewable energy systems
- Audio visual

Other Services

- Quantity surveying services
- Urban planning
- Renewable energy design
- Pharmaceutical GMP design
- Nuclear technology/Nuclear medicine facility design



Methodology

4MPM provides end-to-end consultancy services to developers, private corporations, and institutions, covering a complete project life cycle.

In today's competitive environment, it is crucial to fast-track social, industrial, and tourism infrastructure development. The industry requires a model to help companies involved in these projects overcome challenges and deliver on time and within budget. By balancing human interaction with the use of AI, 4MPM has developed its human resources, quality systems, design management techniques, and application of technology and infrastructure to meet these challenges and support successful project implementation.

4MPM has an in-house capability to offer a full suite of EPCM services, from planning and feasibility studies to detailed engineering, procurement, and construction management. They provide EPCM services for owners, developers, and EPC contractors.



How it works?

01

Planning

- Design baseline report
- Siting study
- Feasibility study
- Risk assessments
- Detailed project report
- Due diligence
- Environmental impact study
- Local authority permits and clearances
- Financial modelling
- Design closeout

02

Design & Tender

- Single line drawings
- Tender documentation
- Complete layouts including 3D modeling, BIM and detailed specifications
- URS development
- Tender evaluation
- Tender selection
- Vendor scrutiny
- Detail design review (Architectural, structural, mechanical & others)

03

Procurement

- Equipment/Finishing specification
- Bid process
- Bid evaluation
- Purchase order evaluation

04

Construction

- Project program
- Cost control and audit processing
- Communication management
- Construction contract administration
- Site establishment processes (Contractor and local authority)
- Construction process supervision
- Commissioning supervision
- Snagging and testing
- As built drawings
- Construction completion certificates and closeout.

05

Operations

- Facility documentation
- GMP licensing process
- Facility operation training
- Facilities management

We take responsibility for:

- Construction-related professional disciplines, including architecture, engineering, and project management, among others, depending on the nature of the project.
- Procurement and procurement management of services, equipment, and finishing items according to the agreed procurement strategy. Acting as the owner's agent in scheduling procurement and monitoring progress.
- Construction management, acting as the owner's representative on the construction site and performing site supervision, coordination, scheduling, project reporting, health and safety management, quality management, commissioning to handover, and warranty management.

4MPM delivers projects and provides expertise in engineering, construction supervision, and project management, offering a wide range of consulting and advisory services. Our resources and energy are focused on responding to and meeting the needs of our customers and creating long-term sustainable value for all stakeholders.

Our Portfolio

Residential (+\$10m)



Nuclear (+\$25m)



Medical (+\$5m)




Our clients


- Hamdani Investments
- Nuclear Medicine Research Infrastructure (Numeri)
- Steve Biko Academic Hospital
- Uganda Cancer Institute (UCL)
- Islamic Medical Association of South Africa
- Department of Science and Innovation (South Africa)
- IBA Radiopharma solutions



Our Contact

 +27 84 5678324

 www.4mpm.co.za

 info@4mpm.co.za

 23 Olympia street, Eastgate
Sandton, Johannesburg, 2090
South Africa